

CROFT MILL



STORM FORCE PG 15



WIND IN THE EAST, SMELLS IN THE WEST
SILVER - PG 17



STRICTLY BALLROOM - PG 15



WOOL GROUSE - PG 17



A COLLECTION - PG 2



BEE LINE PG - 3



BOILED WOOL MUSTARD - PG 4



BOILED WOOL - PG 4



CORDUROY MORE JOY -PG 5

beautiful fabrics delivered to your door

Cutting a long story short; we have all been in a situation where we have wanted someone to curtail their ramblings, and similarly, there will be our friends who have wanted us to curtail our ramblings. One of those, of course, is an insult, the other is entirely justified.

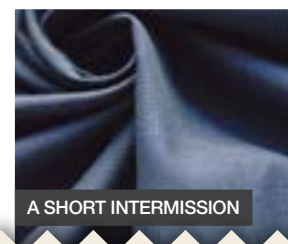
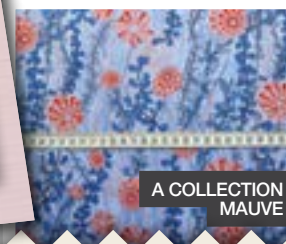
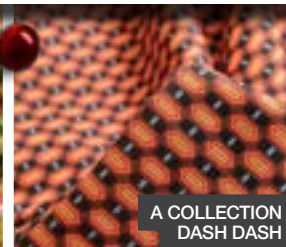
Weather-wise it has been a glorious summer, for most, with people wishing they had never booked holidays abroad and when many of you probably didn't want to stop at home sewing. President Trump has been and gone, Boris has gone but not quite far enough, what a mess this whole Brexit thing is! Well, thank heavens for football, which by the time you read this will be in full flow again and that could be an even bigger mess than Brexit! In fact, if all the money that was going into football went into government coffers we probably wouldn't have any worries ever again.

What was that about cutting a long story short?

I have been busy; we have rooms stuffed full of fabric so this suggests to me that this is going to be a huge catalogue. Caroline tells me she wants to get in as much as possible because it has been a long time since the last one, and it may be, until the next. So much for the leaflogues she mentioned!

So, on to cloth...
Enjoy the read and happy sewing if you should so choose!
Until next time.

Alan and Caroline



A

A COLLECTION - PHOTO ON FRONT PAGE

A collection of beautiful, quality, cotton lawn fabrics.

a) Gilt Lemon - A pale lemon background with all over somewhat regimented floral medallion and laurel sort of print in blues and green with gold detail. Not so sure whether this endearers the Far East.

b) Mauve - Pale mauve background with a growing leafy fine pattern interspersed with what looks to be hot air balloons viewed from above, and these come in pale orange, red, darker blue and a deeper mauve.

c) Kaftan White - A white background or perhaps it is a very pale blue. Decorative window pane like squares about 10cm square with floral detailing towards the centre. This comes in all manner of blues, all darker than the background of course. But no other colours.

d) Gilt Rich - A rich cream background with vaguely heraldic detailing in pink, black, blue and gold.

e) Dash Dash - A black background with orange 'letterboxes' interspersed with blue dashes.

f) Kaftan Blue - A mid blue ground with a square print not unlike item C with a border in dotted green and yellow and then pink floral detailing towards the centre of the square.

g) Gilt Black - A very Eastern all over colourful design on a black ground with lots of gold detailing.

REF:1808B09 Width: 150cm/59" £9.95 PER METRE

A PROBLEM

I had to have a bit of an argument about the colour of this cloth, I say it is black, but, someone who isn't here thinks it is navy, so I have won the argument. It is black. What is it I hear you say, it is a black cotton lightweight trouser fabric with the tiniest of woven diamond shapes. In addition to this it has a very soft hand and a dull sheen to the finish. It can be formal or in-formal according to your mood.

REF:1807P01 Width: 154cm/60" £7.50 PER METRE

A SHORT INTERMISSION

150cm wide, lightweight, cotton, trousering in a fine Prince of Wales check in different shades of blue.

REF:1805J16 Width: 150cm/59" £5.00 PER METRE

ALICIA

150cm wide, light, navy, fine polyester crepe dress cloth, with an all over but, sparsely printed with a delicate floral print in pink, green, pale blue, pale beige, mustard and a different shade of pink in the centre of the white tiny flowers.

REF:1807M08 Width: 150cm/59" £9.50 PER METRE

ACES

Down and sideways, from France this 150cm wide, black, fine polyester crepe weave dress fabric with a very sparse, spindly almost growing floral pattern in pink cream, pale beige and two shades of blue, both quite dark with some dark mustard in the centre of one or two of the flowers. They saved printing ink on this one but it is very pretty.

REF:1807P12 Width: 150cm/59" £9.50 PER METRE

A HINT OF MADNESS

Super fine polyester georgette crepe whisper light and floaty in a design that might have been created by someone who would be a bit miffed at something, it is an all over abstract floral design in red, black and cream with some colours interposed on top of others, quite fetching.

REF: 1806E01 Width: 150cm/59" £5.50 PER METRE

A TURN UP FOR THE BOOKS

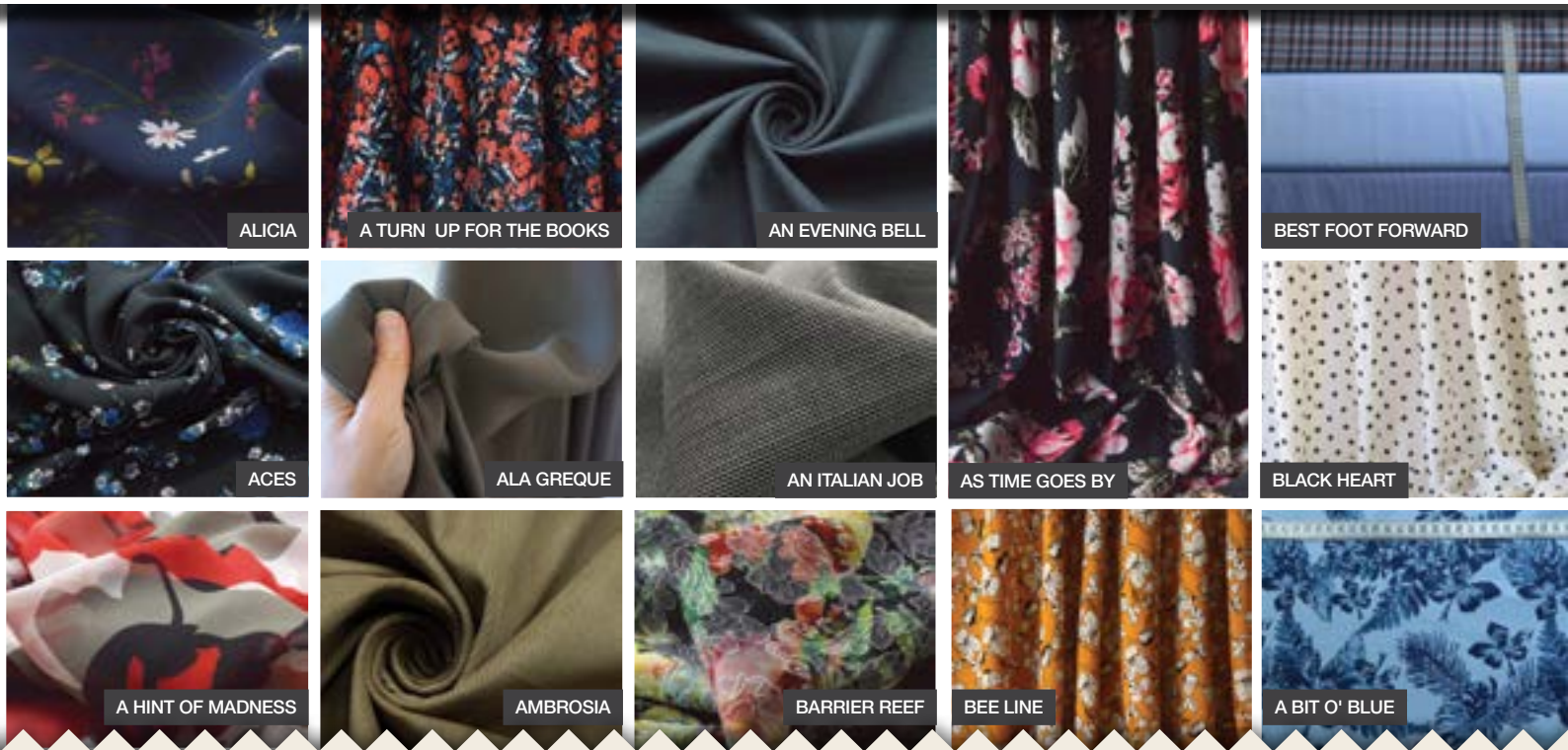
Here we have a rather special 150 cm wide 100% Viscose Moroccan dress fabric in a lovely floral design on a black ground, of a calibre you would only mostly find in the better shops on the high street. This is utterly delightful and will make into a fabulous skirt or dress or even a pair of loose fitting trousers.

REF: 1804R16 Width: 150cm/59" £5.50 PER METRE

ALA GREQUE

This 150cm wide fine polyester dress fabric comes in a shade of dark khaki/olive which to my mind goes well with olive skin; mind you we will be hoping that it goes well with all skin types. I am told that it is a fairly fashionable colour and having checked up on that a little bit I can see that it is used in fairly high classed look, fitting big legged trouser things. I'll bet it's a delight to wear.

REF: 7212 Width: 150cm/59" £5.50 PER METRE



❁ AMBROSIA

Beautifully soft 146cm wide 8 wale velvet German made corduroy in a taupe soft caramel colour; heavenly.

REF:6360 Width: 146cm/57" £7.00 PER METRE

❁ AN EVENING BELL

a) Dark Airforce Blue – 150cm wide, soft twill slightly brushed woven, Autumn shirting.

REF:1702J01 Width: As Stated £6.50 PER METRE

❁ AN ITALIAN JOB

I couldn't just bring to mind the character that Noel Coward played in the film the Italian Job. I think it might have been Mr Bridger, who for the most part was in prison and dressed in prison uniform. This cloth is certainly one that Noel Coward himself might of worn. It is 150cm wide, Italian worsted wool, light weight suiting, in the tiniest hounds tooth type checks. Drapes beautifully with a lovely soft hand and will suit all who wear it.

REF:1807L03 Width: 156cm/61" £10.00 PER METRE

❁ AS TIME GOES BY

140cm wide, navy blue, rayon, fine silky dress fabric, with a fairly large but reasonably sparse floral pattern in red, pink, white and tinges of olive green. This cloth could be from any era you would want it to be from.

REF:1807BN01 Width: 140cm/55" £5.50 PER METRE

B

❁ BARRIER REEF

150cm wide, cotton, polyester, spandex, light weight cloth in an all over multi-coloured floral and other shape design, which would suggest underwater, and therefore the Barrier Reef or maybe another reef. It comes fairly muted as indeed it would be below the sea, but brightening as they neared the surface. This cloth will lend itself for all manner of garments and in the right place will be absolutely stunning.

REF:1807P16 Width: 150cm/57" £10.00 PER METRE

❁ BEE LINE

140cm wide, soft lightweight viscose dress fabric in mustard with an all over black and white floral print, and I'm sure if I looked hard enough I'd find bee's

REF:1809014 Width: 140cm/55" £6.00 PER METRE

❁ BIG BOO

165 wide, bright orange cotton canvas eminently suitable for Michael Portillo's jackets or even mine if I could get someone to make one.

REF:1708K01 Width: 165cm/64" £6.00 PER METRE

❁ BEST FOOT FORWARD

d) Twill - very soft pale blue twill weave cloth with a slight shimmer to the raised part of the twill.

e) Houndstooth - pure cotton finely woven, tiny houndstooth check in black white and blue.

k) My Favourite - This is perhaps my favourite of all these shirting's in that it is a nice bold check.... this time we have a cotton shirting basically in lilac, dark blue and Turquoise with a double fine stripe in peach or could be orange very soft indeed.

REF: 6350 Width: 150cm/59" £6.00 PER METRE

❁ BLACK HEART

A very fine plain woven viscose in cream with a tiny all over black heart design. It is actually quite pretty if you don't read too much into it.

REF: 1806E25 Width: 140cm/55" £6.25 PER METRE

❁ BIT O' BLUE

Cotton poplin print fabric with a leaf print in wonderful shades of blues. Very pretty indeed, this material would make a beautiful dress, top or skirt.

REF: 1810AC04 Width: 112cm/44" £6.95 PER METRE

DELIVERY

We aim to despatch your parcel within 3 days of receipt of your order. More details can be found on our website www.croftmill.co.uk



✿ BODYCON JERSEY

150cm wide fine stretch polyester jersey in black which folds and falls as gracefully as you like or indeed it can be as skin tight as you like. The old ones are the best they say.

REF: 3375 Width: 150cm/59" £5.00 PER METRE

✿ BLOOMING MARVELLOUS

Beautiful Liberty silk dress fabric in a the most glorious of prints.

REF: 1511L02 Width: 138cm/54" £24.00 PER METRE

✿ BOILED WOOL

A absolutely splendid Italian, 150cm wide, Italian dense knitted, woollen jacketing, in pearl grey with a black and deep turquoise sprawling twiggly tree like pattern, where the turquoise leaves are bobbly. There is not a lot of it about.

REF:1807P02 Width: 155cm/61" £26.00 PER METRE

✿ BOILED WOOL MUSTARD

65% polyester, 35% wool, lightweight boiled wool in mustard.

REF:1810M08 Width: 150cm/59" £0.00 PER METRE

✿ BURR

150cm wide, Black superfine polyester woven velvet with the softest hand you will ever come across. You can sit with your bowl of gruel and not worry too much about spillage because you can hand wash this cloth. Quite substantial, without a lot of weight. Gorgeous.

REF:1808B24 Width: 150cm/59" £10.50 PER METRE

DELIVERY CHARGES

Our standard P&P charge is £5.95. This excludes non-UK mainland postcodes which are:

IV; HS; KA27-28; KW; PA20-49; PA60-78; PH17-26; PH30-44; PH49-50; ZE; BT; IM; TR21-25

For these areas the charge depends on weight. Surcharges may apply and vary from £0-£8 on top of the standard charge. Please place your order and we will confirm any extra charges the charge before we ship.

More details can be found on our website www.croftmill.co.uk

C

✿ CANDY CREPE

Double crepe dress fabric in various colours, fabulous fabric.

k) Royal a) Red q) Lime
m) Deep Damson r) Grey j) Cerise
i) Teal h) Peach l) Navy
g) Aqua o) Olive b) Dusky Pink

REF: 1990 Width: 145cm/57" £9.50 PER METRE

✿ CAN'T FIGHT THIS FEELING

Silky soft, black viscose dress fabric with an all over delightful print in blue with little pink triangle shapes hither and wither. Nice enough to be not ordinary.

REF: 1806E36 Width: 150cm/59" £6.50 PER METRE

✿ CHASING RAINBOWS

A new and rather beautiful day has dawned here in the North East corner of Lancashire, a little more than a stone's throw away from the Yorkshire border, however, that tends to be a bit of a moving feast, as occupants of the nearby town of Barnoldswick firmly believe they are in Yorkshire which in fact, they did used to be until the powers that be said it should no longer be. So, we now have people willy nilly putting up signs saying this is now Yorkshire, no it isn't, this is now Lancashire..... All good fun! That is one story for today, the other is this quite fine array of Cotton Chino Trousering which I shall list and describe as best I can.

a) **Grey** - 140cm wide, 65% cotton 35% polyester plain weave cloth in grey with just a hint of very pale blue.
b) **Navy** - 150cm wide, rather elegant superfine pure woven cotton chino again in dark navy.
c) **Pale Olive** - 150cm wide, fairly dark olive plain weave cloth with a very fine water repellent coating, not to be confused with waterproof this just repels water, for how long I am not sure.
d) **Tan** - 150cm wide, fine twill weave cloth in pale brown.
e) **Khaki** - 150cm wide, fine twill medium weight cotton trousering in dark beige or light brown.
f) **Mustard** - A little ray of sunshine, 150cm wide, very fine hopsack in mustard.
g) **Beige** - 140cm wide, very fine twill weave heavy cotton trousering in pale khaki, some might even say beige

REF:1808J06 Width: As Stated £6.00 PER METRE



❁ CHECKERED HISTORY

140cm wide substantial cotton canvas in a cream with pale blue, air force blue and dark red. 1cm check. Great as a pair of Summer trousers or shorts, but I am sure origins to occasional cushion covers.

a) Cream with air-force blue

b) Cream with pale blue, dark blue and red

REF: 1801002 Width: 140cm/55" £6.50 PER METRE

❁ CHINO NAVY - (NO PHOTO)

160cm wide quite substantial German cotton twill in a very dark navy. This is heavier than the chasing rainbow quality.

REF: 1809J04 Width: 160cm/62" £6.50 PER METRE

❁ CORDUROY – OH THE JOY

Just in we have some lovely colours in a lovely quality 100% cotton corduroy, perfect for jackets, trousering, skirts, this (almost) 8 wale mid blue corduroy material is perfect for your country attire and at 320gsm will be especially lovely for warmer trousers in the colder months. For the brave, go all blue, in a matching jacket and waistcoat.

a) Grey b) Blue c) Olive d) Blush
e) Rust

REF: 1808B57 Width: 150cm/59" £10.00 PER METRE

❁ CORDUROY – MORE JOY

Fabulous 145cm wide navy needlecord fabric. It is almost impossible to buy cloth when you see good stuff, Caroline is obviously struggling, and I am struggling to navigate in this room 10 deep with rolls of new fabrics, but, I have just found some more joy, 4 superb 16 wale needlecord fabrics. 210gsm this is good for shirts, jackets and trousers, skirts, dresses and children's clothing

a) Red b) Claret c) Navy d) Cerise

REF: 1808B55 Width: 145cm/57" £10.00 PER METRE

❁ CUDDLY

160cm wide, polyester fur fleece in

a) Air force blue, b) Dark Blue, c) Purple, d) Brown.

Very much the sort of cloth that you might want to cuddle up with in the absence of a pie or a pint or drive along with the car windows open.

REF: 1809J21 Width: 160cm/62" £7.00 PER METRE

❁ COTTON CANVAS - PHOTO JO - BACK PAGE

a) Jo - a multicoloured paisley design, beautiful canvas. 155cm wide
£15.50 PER METRE

b) Dark Amazon - a dark black background with a multicoloured leaf design, perfectly good for all kinds of craft and home use. 150cm wide.
£12.50 PER METRE

c) Fantastic Jurassic - a navy background and cute dinosaurs in various colours all over the fabric. 150cm wide. £12.60 PER METRE

REF: 1808B02 Width: As Stated £ AS STATED

D

❁ DAZZLE

A rather nice black sequin fabric; not too shiny because the sequins are not glossy and they overlap in a non-uniform manner. The sequins catch the light in all different ways so the fabric has a classy appearance, a bit of glamour but not OTT. The sequins are sewn onto a knitted fabric so there is a little bit of movement, but not as much as you might think because the sequins hold it together. It would make rather a nice skirt or top

REF: 1711J01 Width: 140cm/55" £7.50 PER METRE

❁ DELIGHT ON FRIDAY NIGHT

136cm wide soft viscose dress fabric in an all over white floral pattern on a black ground with olive foliage and other tiny flowers in lilac and pale green. Call me old fashioned if you like but this cloth oozes class.

REF: 1807P13 Width: 136cm/53" £9.00 PER METRE

❁ DENIM – SHIRTING

140cm wide, cotton denim shirting of paramount fineness, beautifully made, extremely soft and rare as hens teeth.

REF: 1807P07 Width: 140cm/55" £10.50 PER METRE

❁ DENIM – WASHED DENIM - PHOTO ON BACK PAGE

Wonderfully soft 59inch wide 8oz washed denim

f) Dark Blue g) Mid Blue h) Pale Blue

REF: 2086 Width: 150cm/59" £11.50 PER METRE

✿ DENIM - SAUSAGES

160cm wide, lightweight striped denim in a blue and cream fine butchers stripe. After that introduction can one say anything else? Boom, yes you can.

REF: 1807P14 Width: 160cm/62" **£12.00 PER METRE**

✿ DOES MY BUM?

140cm wide, 63% polyester, 27% elastane, 3% knitted trousering in either navy blue or fluorescent pink and that is one heck of a colour. Beautifully made cloth from Portugal, how tight can you wear it?

a) Navy **b) Fluorescent Pink**

REF:1807M11 Width: 140cm/55" **£11.50 PER METRE**

✿ DON'T BLINK

145cm wide, whisper light rayon dress fabric in black with the tiniest of white floral design. The flowers themselves are all individual so there is an awful lot of the background showing. Beautifully fine so hang on to your skirt in a breeze.

REF:1807BN07 Width: 145cm/57" **£6.00 PER METRE**

✿ DO UNTO OTHERS

This lovely silk chiffon in very Autumnal, floral design, in browns, turquoise, black, beige and pale blue all on a pale olive background. Impossibly fine, and absolutely glorious.

REF: 1803M39 Width: 140cm/55" **£16.00 PER METRE**

✿ DREAD NAUGHT

150cm wide, 73% polyester, 21% viscose, 6% elastane, light weight, suiting in proper navy. Virtually creaseless easy care, soft finish what else do you need in a trouser fabric.

a) Navy **b) Black**

REF:1807BN02 Width: 150cm/59" **£7.00 PER METRE**

✿ DRESSING FOR DINNER

148cm wide, fine, very dark navy. Woven cotton plain weave, trousering/jacketing with a slight sheen to the surface. Beautifully woven in 100% cotton.

REF:1710J08 Width: 148cm/58" **£6.00 PER METRE**

E

✿ ENMASSE

150cm wide, finest polyester crepe dress fabric in French navy blue with and all over, reasonably large floral rose pattern in bright red. Quite magnificent.

REF:1805O13 Width: 150cm/59" **£7.00 PER METRE**

✿ EVERY LITTLE BREEZE

Super soft floaty viscose jersey in a bit of a builder's block pattern in shades of shiny cream and nude/flesh colour. Each block is no more than a centimetre long and about half of that wide. One of those, you can't tell you've got it on cloths.

REF: 6270 Width: 150cm/59" **£6.00 PER METRE**

F

✿ FINEST PIQUE

These days people would use a rather crude gob smack, when they are amazed or astonished or in some disbelief when a far better, I go to the foot of our stairs, says so much more. This cloth is a fine soft knitted jersey in 72% Polyester and 28% modal which is a synthetic cotton so to speak. It has a delightful hand and will drape wonderfully well. It comes in this rather plain but splendid khaki.

REF:1807M04 Width: 150cm/59" **£15.00 PER METRE**

✿ FLORAL DISGUISE

150cm wide, woven polyester crepe dress fabric with a hint of stretch in an olive sort of green with an all over floral pattern in white, pale blue, dark red and grey. Fairly sombre, but attractive none the less.

REF:1809015 Width: 150cm/59" **£10.50 PER METRE**

✿ FOR THE FINER THINGS - SILK CHIFFON

Beautiful black silk chiffon fabric. This is not dead flat - there is a subtle and lovely crinkle to it.

REF: 7346 Width: 140cm/55" **£8.95 PER METRE**



DENIM - SAUSAGES



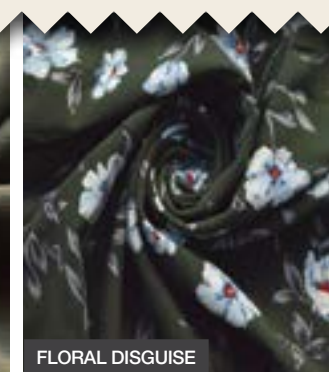
DO UNTO OTHERS



DON'T BLINK



FINEST PIQUE



FLORAL DISGUISE



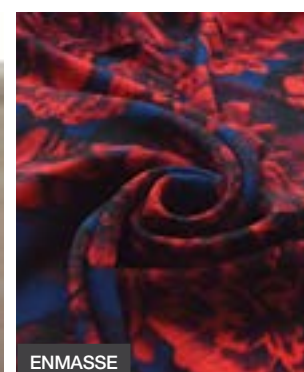
DOES MY BUM



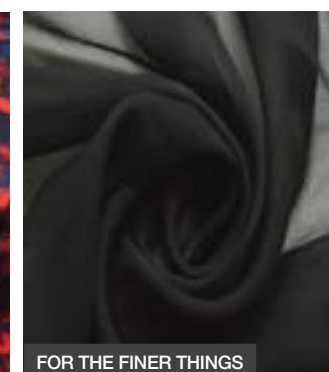
DRESSING FOR DINNER



EVERY LITTLE BREEZE



ENMASSE



FOR THE FINER THINGS

FOUR WEDDINGS

Good quality poly viscose lightweight suiting in a large scudo black watch tartan clad that is t say it hasn't got all the pattern that a black watch needs to have this is just navy blue and green. Nonetheless this is still an extremely attractive and reasonably subtle pattern. Golfing trousers spring to mind!

a) Small Check

b) Large Check

REF: 1322

Width: 150cm/59"

£8.00 PER METRE

G

GIVE US A BREAK

148cm wide, polyester, elastane trousering in black. Sufficiently stretchy with a slight sheen to the surface.

REF:1710J02

Width: 148cm/58"

£6.00 PER METRE

GINO

A 145cm wide, 85% polyester, 12% viscose and 3% elastane crepe dress cloth, in airforce blue. It just hangs there. Rather splendid.

REF: 1807M13

Width: 145cm/55"

£12.00 PER METRE

GO FORTH AND MULTIPLY

160cm wide, 80% cotton 20% silk shirting in a pale blue chambray weave. So good it hurts me to see it go.

REF:1712J02

Width: 160cm/62"

£8.00 PER METRE

GOING BACK - (NO PHOTO)

If memory serves me right, that was the name of a song Dusty Springfield used to sing. This cloth, however, is nothing as flamboyant as she was, but it is none the less a fearsome thing in its own right. 140cm wide, cotton trousering in the finest of hop-sack weaves in very dark navy a lovely finish with a nice soft hand.

REF:1702J02

Width: 140cm/55"

£6.50 PER METRE

GOLD CHAIN

158cm wide, soft denim blue denim shirting with an all over large sprawling embroidered floral pattern in a silky beige, could be a bit Annie Oakley.

REF:1809O16

Width: 158cm/61"

£15.00 PER METRE

GIVE A LITTLE - (NO PHOTO)

142cm wide, substantial black, cotton, fine twill trousering with just a hint of stretch.

REF:1609E04

Width: 142cm/55"

£6.50 PER METRE

GROWING PAINS

150cm wide, 100% soft, French viscose dress fabric in a delicious pale green almost eau de nil. In other words very delicate shade and upon which is printed growing sparse vegetation in black pale peach, much deeper peach, pale grey with white fairly small flowers, beautifully delicate.

REF:1807P09

Width: 150cm/59"

£10.50 PER METRE

H

HEAVILY DISGUISED

If you image watching an episode of Mid-Summer murders, you would come across a scene where someone is looking at something through the impenetrable branches and leaves of a bush. This 150cm wide black and grey polyester Ponte Roma jersey brings it readily to mind. The design is abstract which might resemble animal markings. It might make leggings but would be better suited to a dress or top with a pair of black trousers or jazz it up with a pair of red ones.

REF: 1803E13

Width: 150cm/59"

£7.00 PER METRE

...HIS WONDERS TO PERFORM

140cm wide, traditional denim blue, knitted denim, made from 96% cotton, 4% elastane using both dark blue and cream yarns. This is definitely one for the tight treasure brigade.

REF:

Width: 140cm/55"

£9.00 PER METRE

HOUND DOG

Polyester, lightweight suiting, in a tiny black and white hounds tooth check.

REF: 1801009

Width: 145cm/56"

£7.50 PER METRE

OUR GUARANTEE

As long as it has not been cut or washed, we will replace or make a refund for anything not to your liking within 28 days delivery of your fabrics. After that we are reasonable too, so please just call us and we will do what we can.



DREAD NAUGHT NAVY



GROWING PAINS



GINO



HEAVILY DISGUISED



HIS WONDERS TO PERFORM



FOUR WEDDINGS - TOP TO BOTTOM - A, B



GO FORTH AND MULTIPLY



GOLD CHAIN



GIVE US A BREAK



HOUND DOG

CRAFT COTTON FABRICS

A) GREEN STARS

B) SANTA BLUE

C) FESTIVE FOLLY

D) SPOTTY SNOWMAN

E) RED STARS

F) SANTA GREEN

CHRISTMAS GLITTER - REF:1808B04 Width: 112cm/44" £10.75 PER METRE

COTTON LUREX - REF:1809O09 Width 112cm/44" £6.50 PER METRE

A) TARTAN GREEN, B) RED, C) TARTAN RED, D) GREEN - REF: 1809C909

POPLIN PRINTS - REF:1810AC01 Width:112cm/44" £6.95 PER METRE

A) EAT YOUR CARROTS

B) BRUSSEL SPROUTS

C) GET YOUR HAT ON

DIGI LINEN - REF: 1809C908 Width 140cm/55" £12.00 PER METRE

CHRISTMAS CRAFT REF:1809C905 140cm/55" £12.00 PER METRE

D) MULBERRY TREE, A) WOODLAND STAG, B) LOVE SCANDI, C) LOVE HEARTS

A) STARRY NIGHT, B) TABLE, D) GOLD POLKA, C) FAIR - REF:1809C905

FAT QUARTER BUNDLE - 5 PIECES 100% COTTON £9.95 PER UNIT

FAT QUARTER BUNDLE - 6 PIECES £11.95 PER UNIT

WHISPER- REF: XFQ02E

AUTUMN LEAVES- REF: XFQ02A

DREAM CATCHER- REF: XFQ02D

SPRIG OCTOBER
REF: XFQ02F

SPRIG MARCH
REF: XFQ02G

TAPESTRY - MADE IN A POLYESTER/COTTON BLEND - REF: 1809C913

Width: 140cm/55" £15.00 PER METRE

E) HOLLAND

D) ZIG ZAG

B) HANDBAGS AND GLAD RAGS

A) LLAMAS

C) PETAL

CHRISTMAS POLY/COTTON

65% polyester 35% cotton
REFERENCES AS SHOWN -
Width: 112cm/44" - £3.25 PER METRE

THE BIG MAN
REF: 1809O08

BRIGHT STRIPE
REF:507C

FESTIVE STRIPE
REF: 507A

I WANT PUDDING
REF: 507B

POLAR BEAR PARTY
REF: 1808BN07

TWIG AND BERRIES
GREEN REF: 1808BN09A

SNOWMAN ON ICE
REF:507D

LONELY SNOWMAN
RED - REF: 1808BN05

TWIG AND BERRIES
MINT REF: 1808BN09B

YOU'LL NEVER
CATCH ME
REF: 1808BN03

beautiful fabrics delivered to your door

POPLIN PRINTS

All these poplins are beautifully woven and a lovely hand.
We have plains to match most of these in our Plain Dyed Cotton Poplin on page 10, just ask us to match.

REFERENCES AS SHOWN - 45" (114cm) wide - **£6.95 PER METRE**

JESSICA - REF: 871

LIARS & LOVERS- REF: 1807O19

FAITH
A) CHARTREUSE
B) NAVY
C) GREY
REF: 1807O06

JASLYNN D) TEAL
C) NAVY, B) GREY,
A) IVORY, - REF: 1807O24

TINY ROSE
T TO B
A) BLUE
B) PINK
C) YELLOW
D) NAVY - REF: 1062

ENGLISH ROSE
A) PINK, B) BLUE - REF: 20

LEGLESS - REF:1810AC06

SEWING ROOM BEAUTIFUL
BLUE'S - REF: 1808B29

WHAM BAM - REF: 1805O04

SEWING ROOM
ZEBRA E) BLACK
S) BLUE - REF: 6330

SEWING ROOM
ON TREND - REF: 1808B19

GREY FEATHER
REF: 7352

MILLIE - REF: 1809O12

STRIPE
T TO B
B) PINK
A) STRIPE
C) MULTI - REF:CM72

SEWING ROOM
STARS - REF: 6330J 6330I

RAINBOW BRIGHT - REF 6432

EVIE'S DREAM - REF 6433

SITTING PRETTY B) BLUE
A) IVORY - REF: 8161

SEWING ROOM
SUITED AND BOOTED
REF: 1808B27

SEWING ROOM
PIRATE PARTY - REF: 5012C

BLACK BEAUTY
REF: 1807O20

BLOOMING HECK
REF: 1810AC10

PEACOCKING - REF:1810AC09

CRAZY CAT LADY
REF:1810AC08

RHYTHM NATION
REF:1810AC07

PERFECT POPPIES
REF:1810AC05

SEWING ROOM
ISLAND LIFE -
A) CERISE, B) BEIGE,
C) BLUE GREY
D) NAVY, E) GREY -
REF: 5017

CONRAN
TOP TO BOTTOM
A) SHERWOOD
B) AUTUMN
C) PINK
D) BLUE
REF: 100

CAROLINE
TOP TO BOTTOM
A) PINK
D) CHARTREUSE
B) DELPH
C) NAVY
F) AQUA
REF: 701

CARPE DIEM
TOP TO BOTTOM
B) BLACK,
A) IVORY
C) AQUA
REF: 8160

LEWIS
TOP TO BOTTOM
A) NAVY
B) SILVER
C) BLACK
D)DELPH - REF: 6437

PUT THE KETTLE ON

65% polyester/ 35% cotton
REFERENCES AS SHOWN -
44" (112cm) WIDE - **£3.25 PER METRE**

SWEET GARDEN
A-C-B - REF: 6439

STRAWBERRY FIELDS
- REF: 6439E

DAFFODIL
REF:1807BN11

WISHING TIME AWAY
A, B, C - REF: 3001

SWEETNESS AND LIGHT
REF: 1808BN01

DINO AND FRIENDS
REF: 1808BN02

DITTO
A-E-F-G-REF: 6440

IN THE SHADOWS
- REF: 6429

ORCHID - I - H - REF: 6439

SAILING
REF: 1805021

STOCK FABRIC

Fabric Essentials

BRODERIE ANGLAISE 5 HOLE

BRODERIE ANGLAISE 3 HOLE

A nice quality 3 or 5 hole Broderie Anglaise fabric in either cream or white. 80% poly, 20% cotton.

- a) White - 3 hole
b) Cream - 3 hole
c) White - 5 hole
d) Cream - 5 hole

REF: 15 Width: 44"/112cm

£4.95 PER METRE -
£3.75 PER METRE (30M) ROLL

BULL DURHAM

100% cotton unbleached but finished 'bull denim' fabric. A heavy weight twill. Approx 381gsm

REF: 011 Width: 60"/152cm

£7.50 PER METRE
£6.00 PER METRE (20M) ROLL

BLACK OUT CURTAIN LINING

Blackout lining fabric, which comes in white in spite of its title.

REF: X1 Width: 54"/137cm

£6.00 PER METRE
£4.50 PER METRE (50M) ROLL

CALICO

Unbleached cotton calico fabric. Approx 208gsm

REF: X2 Width: 60"/152cm

£5.00 PER METRE
£4.00 PER METRE (25M) ROLL

CURTAIN LINING

Sol proof superb cotton satin, curtain lining fabric in ecru. Will probably last as long as your curtains.

REF: X3 Width: 56"/142cm

£7.00 PER METRE
£6.00 PER METRE (20M) ROLL

FANCY DRESS SATIN

Polyester satin fabric comes in a range of colours, Great for fancy dress.

- a) Black b) Lime
c) Pale Lemon d) White
e) Pale Peach f) Red
g) Claret h) Cerise
i) Turquoise

REF: 8138 Width: 59"/150cm

£4.50 PER METRE

1 INCH GINGHAM

1 inch edged 80%poly, 20% cotton gingham fabric in Red, Green, Blue and now Pale Blue: 45" wide.

- a) Green b) Pale Blue c) Royal
d) Red e) Pink

REF: 50 Width: 44"/112cm

£3.50 PER METRE
£2.75 PER METRE (30M) ROLL

¼ INCH GINGHAM

¼ inch corded edged gingham fabric in all the popular colours: 80% poly, 20% cotton, 45" wide.

- a) Black b) Yellow c) Red
d) Green e) Pink f) Pale Blue
g) Royal Blue h) Lilac

REF: 49 Width: 45"/114cm

£3.50 PER METRE
£2.75 PER METRE (30M) ROLL

CROSS HATCH

Polyester linen look dress fabric, lots of weave being made of polyester it is obviously very easy care, virtually non-iron.

- b) Denim

Ref: 2045 Width: 59"/150cm

£5.00 PER METRE

DUCHESS IVORY

Lovely quality polyester ivory duchess sating firm and soft to handle, most popular for brides and bridesmaids dresses.

REF: 6210 Width: 59"/150cm

£7.50 PER METRE

GOLDFINGER

Knitted polyester lame in gold and silver. A fairly substantial cloth, quite stretchy, and importantly keeps its shape does not ladder.

- a) Gold Lame b) Silver Lame

REF: 1620 Width: 59"/150cm

£7.50 PER METRE
£6.00 PER METRE (20M) ROLL

ITALIAN CREPE

Italian 3%poly,33%viscose, 4%spandex crepe dress fabric In 4 colours. A medium weight, stunning quality with some give to make those well fitted dresses.

- a) Silver Grey b) Teal
c) Damson d) Mustard

REF: 1162 Width: 59"/150cm

£14.50 PER METRE

I SHOULD BE SO LUCKY

A 78% polyester mix suiting with 18% viscose and 4% elastane. A good weight, about 260gsm this twill suiting cloth has good 2 way stretch.

- a) Black b) Grey

REF: 1066 Width: 58"/147cm

£5.95 PER METRE

LUXURY SATIN BACKED CREPE

Superb quality polyester satin backed crepe dress fabric that can be worn either way crepe side or satin side up.

- a) Red b) Royal c) Jade
d) Teal e) Black f) Navy
g) Dusky Pink h) Silver
i) Light Dusky Pink j) Ivory
k) Champagne

REF: 945 Width: 59"/150cm

£12.25 PER METRE

MECHANICAL STRETCH CREPE - KATE MOSS

Black polyester mechanical stretch double crepe fabric. Fabulous quality with great draping qualities.

REF: 381B Width: 60"/152 cm

£11.95 PER METRE

PONTE ROMA

We have a selection of decent quality 70% poly 27% viscose 3% elastane Ponte Roma Fabrics, they come in:

- a) Charcoal Marl b) Silver Grey
c) Navy d) Royal e) Dark Teal
f) Purple g) Damson

Ref: 754 Width: 59"/150cm

£7.00 PER METRE

PRESTIGE

This beautiful polyester crepe cloth doesn't crease and is of a weight suitable for dresses and trousers.

- a) Dragonfly Teal b) Gun Metal
c) Nude d) Royal Blue e) White

REF: 1537 Width: 59"/150cm

£14.50 PER METRE

50/50 POLY COTTON

Beautiful 50% Cotton, 50% polyester fabrics of a shirting weight suitable for dressmaking and also any crafts.

- a) Black b) Raspberry c) Cherry
d) Yellow e) Ivory f) White
f) Lagoon Mint

REF: 6140 Width: 44"/112cm

£3.50 PER METRE
£3.00 PER METRE (20M) ROLL

PLAIN POLY / COTTON

Good quality 65% poly 35% cotton dress and craft fabric.

- a) Black b) Dark Marl
c) Silver Marl d) Pale Blue
e) Navy f) Royal g) Mint
h) Emerald i) Sage Green
j) Yellow k) Red l) Pale Pink

REF: **CM1530** Width: 45"/115cm
£3.95 PER METRE

PAISLEY LININGS

Here we have a fabulous collection of our new Paisley Changeant linings in 8 colours!

- a) Blue b) Purple c) Gold
d) Black e) Rust f) Grey
g) Slate h) Champagne Pink
i) Red j) Mustard

REF: **990** Width: 58"/145cm
£5.00 PER METRE
£4.50 PER METRE (25M) ROLL

PLAIN COTTON POPLIN

100% Cotton Fabric- Plain Dyed Poplin, Beautiful fabric approx. 121gsm suitable for all purposes.

- a) Emerald Green b) Lime Green c) Black d) Dark Navy
e) Light Navy f) Turquoise g) Royal Blue h) Sky
i) Pale Blue j) Aqua k) Palest Grey l) Cream
m) Pale Buttercup n) Bright Yellow o) Pale Pink p) Mid Pink q) Iris
r) Purple s) Claret t) Red u) Palma Violet

REF: **86** Width: 45"/114cm
£5.70 PER METRE - £4.50 PER METRE (25M) ROLL

PERCALE SHEETING

Glorious percale cotton sheeting.
REF: **804** Width: 92"/233 cm
£14.00 PER METRE
£9.00 PER METRE (35M) ROLL

POPLIN PRINT - THE CRAFTY SPOT

This is a really nice quality cotton fabric perfect for quilting, craft and dressmaking. Approx 121gsm

- a) Grey b) Dark Navy c) Light Navy d) Dusky Blue
e) Pale Blue f) Ice Green g) Aqua h) Mint
i) Apple j) Sage k) Soft Lime l) Old Green
m) Yellow n) Candy Pink o) Sienna p) Red
q) Dusky Pink r) Baby Pink s) Cerise t) Taupe

REF: **PP10** Width: 44"/112cm
£6.95 PER METRE

SEERSUCKER

Cotton seersucker fabric.

- a) Pink b) Blue
REF: **97** Width: 58"/148 cm
£5.50 PER METRE
£4.50 PER METRE (30M) ROLL

SIENNA

Fine polyester crepe in black, just soft and melts in the hand silkiness.

REF: **6152** Width: 59"/150cm
£5.50 PER METRE

SPANISH EYES

Beautiful rayon/nylon corded lace in a fine but dense enough pattern to hide all that you want to hide.

- a) Black b) Navy c) Dragonfly
d) Rose Pink e) Dusky Pink
f) Champagne g) Ivory
REF: **1044** Width: 56"/145cm
£18.00 PER METRE

SUPERSONIC

Superfine superb cotton lawn with a calendared satin finish.

- a) Ivory b) Black c) White
REF: **303** Width: 53"/135 cm
£12.00 PER METRE
£9.50 PER METRE (15M) ROLL

SUPERIOR WHITE COTTON POPLIN

Superior quality 100% brilliant white cotton poplin. Perfect for sewing and crafts alike.

REF: **26A** Width: 59"/150 cm
£7.50 PER METRE

SUPERIOR SATIN CREPE

A very superior fine polyester 'silk' luxury satin crepe. It just hangs there.

- a) Royal b) Cerise c) Red
d) Ivory e) Emerald
f) Kingfisher Teal g) Black
REF: **1989** Width: 59"/150cm
£12.00 PER METRE

TRIPLE CREPE BLACK

Deepest black and teal polyester woven heavy triple crepe dress fabric of the best quality.

REF: **1570C** Width: 60"/150 cm
£14.75 PER METRE

VOILE

100% Cotton Voile in a
a) Black b) White
REF: **684** Width: 58"/148 cm
£5.00 PER METRE FOR WHITE
£5.75 PER METRE FOR BLACK

WHITE COTTON DRILL

White, quite heavy, cotton twill/drill.

REF: **438** Width: 60"/152 cm
£7.00 PER METRE
£5.00 PER METRE (20M) ROLL

WHITE COTTON LYCRA DRILL

Fine white cotton lycra twill.

REF: **370** Width: 60"/152 cm
£8.75 PER METRE
£6.75 PER METRE (25M) ROLL

WHITE COTTON LAWN

White cotton lawn fabric.

REF: **061** Width: 60"/152 cm
£6.75 PER METRE
£5.75 PER METRE (20M) ROLL

WATER RESISTANT LIGHTWEIGHT CANVAS

Lightweight waterproof canvas, 202gsm

- a) Royal b) Black c) Red
d) Yellow e) Bottle f) Purple
g) Fluorescent Pink h) Navy
REF: **3401** Width: 59"/150cm
£4.50 PER METRE
£4.00 PER METRE (20M) ROLL

WATER RESISTANT CANVAS

PU coated polyester canvas: Very strong and water resistant in various colours. Approx 225gsm.

- a) Black b) Navy c) Grey
d) Khaki e) Forest f) Lime
g) Turquoise h) Beige i) Purple
REF: **1780** Width: 56"/145cm
£9.25 PER METRE
£8.25 PER METRE (20M) ROLL

HEART OF STONE

150cm wide, beautifully made cotton sateen trousering with a little width way stretch to help with the draping.

REF:1806E21 Width: 150cm/59" £6.00 PER METRE

HUDDERSFIELD'S BEST

Huddersfield, a place that has still got a firm grip on British manufacturing. A fine part of the world producing the finest wool fabrics in the world, this is no exception. Shinning Poly/Wool suiting cloth which will make you a stunning item.

a) Vivienne b) Bella c) Cara

d) Thomas - photo on back cover

REF: 6220 Width: 160cm/62" £16.50 PER METRE

IS IT A BIRD?

134cm wide, polyester, jacketing in black with an all over floral/butterfly pattern in pink, mustard, deep turquoise, grey and the odd hint of silver. It's a small enough pattern, to lend itself to jackets, but you could use it as a light weight soft furnishing fabric. Looks great with black trousers.

REF:1807M10 Width: 134cm/52" £18.00 PER METRE

J

JERSEY TOWELLING

140cm wide, pale cream knitted polyester jersey towelling. Probably used as a lining or perhaps even a buffing cloth for fine motor cars.

REF:1611J06 Width: 140cm/55" £4.50 PER METRE

JOHN LOUDEN – SWEET NELLY

A lovely quality dress jersey fabric from our John Louden collection. Floral pattern with a cerise & pink flower design on a navy background. This fabric is 88% polyester & 12% elastane, it has a soft peach skin feel to it, lovely & soft.

REF: 1808O01 Width: 156cm/61" £13.00 PER METRE

JOHN KALDOR – HONEY RYDER - PHOTO BACK PG

This is a classic John Kaldor, quite heavy, 98% polyester, 2% spandex cloth which just falls away from top to bottom. If you were making a skirt you might need braces to hold it up. It comes in a fabulous shade of navy blue with an all over but not dense dahlia floral pattern in pale pink with a little bit of black and mustard in the centre of the flowers, somebody might make some fabulous gowns out of this. I don't really watch that much television and certainly not during the day but, for some reason cloths keep cropping up which remind me of programs which nowadays I think can only be found during the day. Such as Poirot and lots of the characters in there wore beautifully patterned dresses and many of today's designs are just developments of those designs of yesteryear.

REF:1804JK11 Width:150cm/59" £15.00 PER METRE

JOHN KALDOR –FONDLY

This is a polyester crepe dress material from John Kaldor, softly draping and quite substantial fabric in black with an all over leaf and frond design in cream and mustard. Another one you might make curtains with.

REF: 1804JK07 Width:148cm/58" £14.00 PER METRE

JOHN KALDOR – BEYOND THE BLACK HOLE

This is a fine polyester, elastane, jersey, in a creation busting floral/abstract print in oranges, peach, pink, deep red, black, brown, and watered down versions of those colours with some white splodging, an eye catcher.

REF: 1804JK10 Width:160cm/62" £8.95 PER METRE

K

KARLA

Black soft poly viscose, slightly satinised, slightly stretchy, lightweight suiting with a little bit of weave interest, quite different.

REF: 6284 Width: 125cm/49" £7.20 PER METRE

WHOLESALE PRICES

We don't list any wholesale prices in the catalogue but if you want to buy a roll of any of these fabrics listed please contact us, depending on the fabric the minimum amount can be 15 metres, however some rolls come as they are and cannot be offered in such small quantities. Just call 01282 859281 or email info@croftmill.co.uk to discuss.



HEART OF STONE



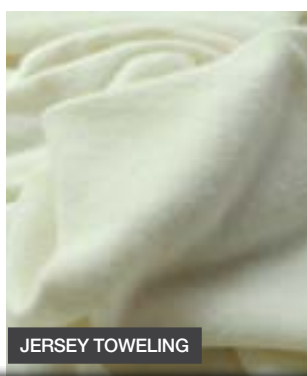
IS IT A BIRD



KARLA



HUDDERSFIELD'S BEST



JERSEY TOWELLING



JOHN LOUDEN - SWEET NELLY



JOHN KALDOR - BEYOND THE BLACK HOLE



JOHN KALDOR - FONDLY

L

LIBERTY

138cm wide beautiful cotton lawns, every bit as beautiful as its more famous counterparts but maybe not quite so delicate. This is a rather suave flower and leaf design in shades of blue on a white ground. A philida sort of cloth.

a) Abstract

b) Blue

REF: 1804R14

Width: 138cm/54"

£18.00 PER METRE

LINEN CHAMBRAY

European made glorious 100% linen chambray dress fabrics at 140cm wide. Super for tunics, trousers and blouses.

a) Mint

c) Cerise

g) Turquoise

REF: 1807M01

Width: 140cm/55"

£16.00 PER METRE

LINEN - SUPERIOR BLACK - (NO PHOTO)

Beautiful 100% linen fabric from one of Ireland's best makers of linen jackets. I tease a little... I think linen is a wonderful cloth. So here we are dark as night - black.

REF: 1805J13

Width: 142cm/55"

£9.50 PER METRE

LUXURY

European, glorious satin backed Navy crepe dress fabric. This is a medium weight superb quality satin backed crepe dress fabric that can be worn either way crepe side or satin side up. Perfect for evening bridal wear. It is very hard to photograph this colour and the actual fabric is a wonderful black but if in any doubt please request a sample.

REF: 1807BS05

Width: 130cm/51"

£12.75 PER METRE

LUCY

140cm wide viscose dress fabric with flower design on a black background. This fabric is perfect for making dresses, skirts or blouses. It's also very lightweight & perfect for summer.

REF: 1805O09

Width: 140cm/55"

£7.25 PER METRE

LININGS - VISCOSE

This is a little parcel of lining fabrics of different compositions which adds a bit of variety to the usual polyester linings that we usually have and in some cases adds more interest to the garment you are making.

a) Light brown, mocha brown very fine herringbone stripe.

b) Silvery grey - plain shot.

c) Very dark green.

d) Mid grey cloth with an all over fairly wide paisley pattern. 140cm wide.

REF: 1709A04

Width: 158cm/62"

£5.00 PER METRE

M

MERCERISED COTTON JERSEY

So here we have one of many new fabulous mercerised cotton jerseys that we have just received.... possibly the finest jerseys I have ever seen, in fact there cannot be a finer jersey anywhere. They are all superfine mercerised cotton of a fineness and density it is almost impossible to understand. Being a chap who thinks he knows, I hope you agree.

a) Lava - 144cm

b) Space - 160cm

c) Punch - 160cm

d) Bubblegum - 160cm

e) Anchor - 170cm

f) Shadow - 162cm

g) Sapphire - 160cm

h) Duckling - 164cm

i) Fossil - 158cm

j) Ballet Slipper - 160cm

REF: 1807J23

Width as stated

£6.75 PER METRE

METALLICA

145cm wide, knitted pleated, polyester fabric in grey/black with lots of silver highlights. A very floaty harem sort of trouser cloth.

REF: 1805J17

Width: 145cm/57"

£5.00 PER METRE

MOUFLON

Two beautiful lightweight wool coating fabrics.

a) Red - lightly brushed lightweight wool mouflon, you could call this a wool fleece. Perfect for a lightweight coat.

b) Beige - as thick as the red but nonetheless a stunning lightweight wool mouflon coating fabric.

REF: 1702J04

Width: 150cm/59"

£20.00 PER METRE



LIBERTY



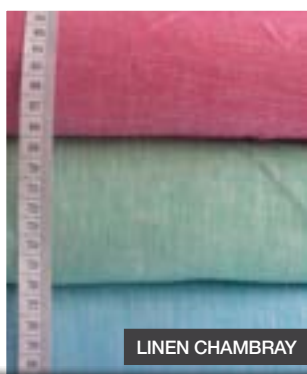
METALLICA



LUCY



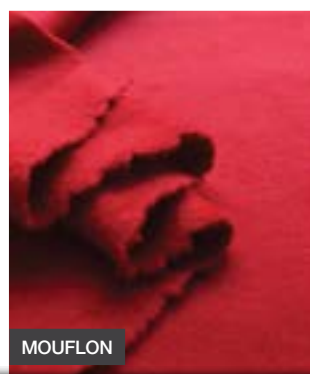
MERCERISED COTTON JERSEY FROM TOP TO BOTTOM
A) LAVA, B) SPACE, C) PUNCH
D) BUBBLEGUM, E) ANCHOR
F) SHADOW, G) SAPPHIRE
H) DUCKLING, I) FOSSIL
J) BALLET SLIPPER



LINEN CHAMBRAY



LUXURY



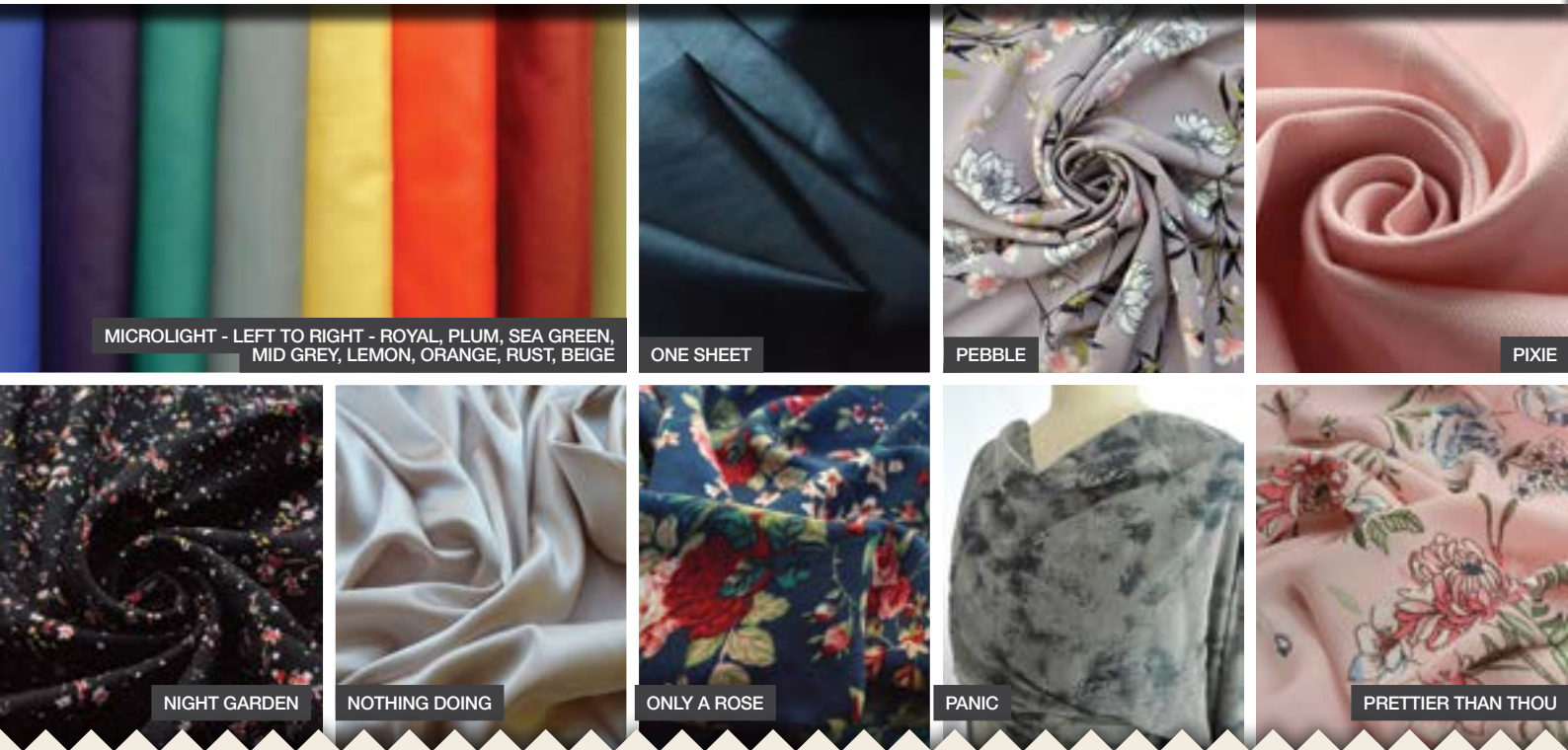
MOUFLON



LININGS VISCOSE



LININGS VISCOSE - MID GREY WITH PAISLEY PATTERN



❁ MICROLIGHT

Lightweight, nylon, microlight performance fabric, to give you an idea it is approximately 2oz, similar to a lining fabric. This comes from a from a manufacturer using Pertex and this fabric is used in some high-end performance gear. Made of nylon, very water resistant, windproof and breathable.

- a) Royal b) Plum c) Sea Green
d) Mid Grey e) Lemon f) Orange
g) Rust h) Beige

REF: 1807L12 Width: 160cm/60" £5.00 PER METRE

N

❁ NIGHT GARDEN

140cm wide, German viscose dress fabric in black with a tiny all over floral and dot design which does resemble the night sky, in certain parts of the world anyway. The colours of the flowers are red, yellow and white, beautifully printed, beautifully soft and drapery.

REF:1807P10 Width: 140cm/55" £9.50 PER METRE

❁ NOTHING DOING

130cm wide, polyester, fine satin dress fabric in a colour described as nude, if that bothers you then a very fine beigey pink.

REF:1807BS06 Width: 130cm/51" £5.50 PER METRE

O

❁ ONE SHEET

140cm wide, dark navy, polyester viscose shirting in a very dark navy with a reasonably shiny finish. Good for big loose tops worn with a big skirt or tight trousers

REF:1710J04 Width: 140cm/55" £7.00 PER METRE

❁ ONLY A ROSE

150cm wide, navy blue soft as you like polyester dress fabric with an all over medium size rose print with other small flowers mixed in between and all in red white pink and green.

REF:1809C05 Width: 150cm/59" £4.50 PER METRE

❁ ONLY THE BEST - NO PHOTO

155cm wide, pure new British made lambswool in Melton coating in deepest glorious navy – made up of a black and light navy. The melange is quite magnificent.

REF:1704K01 Width: 155cm/61" £22.00 PER METRE

P

❁ PANIC

Light weight but not flimsy, polyester dress fabric in a black and taupe "distress" print. It's an all over design and whilst there may be a pattern match I don't think it would be too significant. Very cleverly done.

REF: 1805J10 Width: 150cm/59" £5.00 PER METRE

❁ PEBBLE

150cm wide polyester crepe de chine dress material. It comes in a fabulous pewter with an almost Japanese style floral in black, ivory and green. A classy looking fabric, good for dresses, skirts and loose fitting pants.

REF: 1807O01 Width: 150cm/59" £7.50 PER METRE

❁ PIXIE

150cm wide, 60% tencel, 36% cotton, 4 % lycra, fine twill trousering in a delicate pink.

REF:1807918 Width: 150cm/59" £7.50 PER METRE

❁ POSY - PHOTO ON THE BACK PAGE

110cm wide, fine soft cotton dress fabric in either red or very dark navy with appropriate floral decoration in cream, beige and black on the red cloth or cream, red, beige on the dark navy cloth.

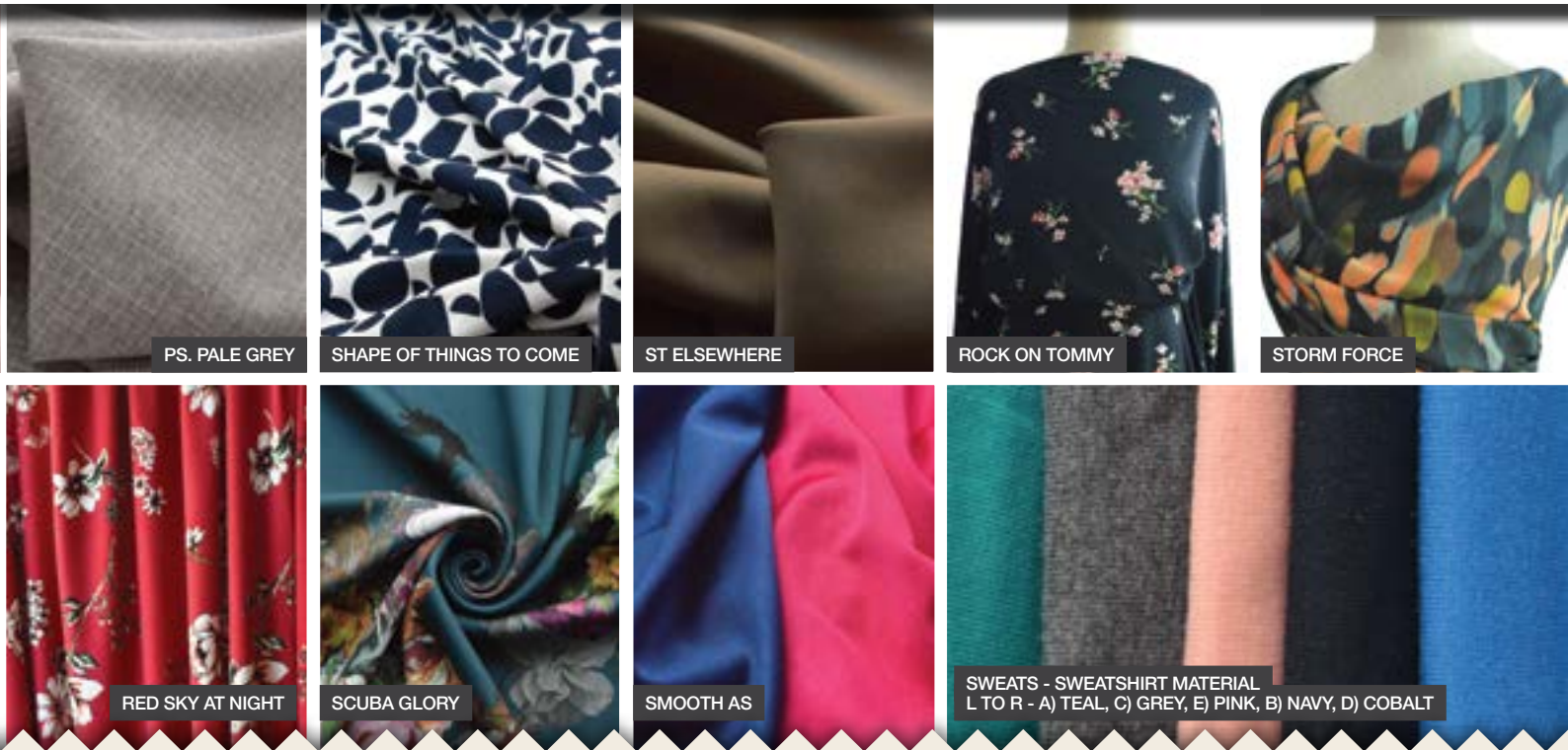
- a) Red b) Dark Navy

REF:1808B31 Width: 110cm/43" £6.00 PER METRE

❁ PRETTIER THAN THOU

Wonderfully pretty georgette crepe dress material. It comes in the prettiest of shades of pink and a mid scale floral print in white, blue and green. Super for dresses and skirts. a) Pink b) Blue

REF: 1804J36 Width: 150cm/59" £5.50 PER METRE



❁ PS. PALE GREY

In the grand scheme of things this polyester lightweight suiting doesn't shake too many trees but a little bit more thought and concentration leads me to believe that it is a lot better than I first thought. It is very fine, very soft and comes in a marled finish, the marling is caused by the use of different colours of the pale grey and white yarns. If this was going into men's golf trousers they would be seventy or eighty pounds a pair.

REF: 1805C02B Width: 160cm/62" £6.50 PER METRE

R

❁ RED SKY AT NIGHT

Lightweight polyester elastane jersey in a gorgeous shade of red, it also has a very fine crepe finish and is of a weight suitable for trousers and dresses.

REF: 1805C15 Width: 150cm/59" £5.75 PER METRE

❁ ROCK ON TOMMY

145cm wide, soft, black, beautiful viscose, German fabric with a sparse but all over floral print in pinks, pale aqua marine, mustard, olive, cream, purple and a little bit of almost white. The flowers are mostly arranged in sprays but there are an odd number of individual ones as well. Another very pretty, lovely quality fabric.

REF:1807P05 Width: 145cm/57" £9.50 PER METRE

S

❁ SCUBA GLORY

Polyester elastane scuba fabric in a stunning floral print. This fabric has a beautiful flower design on a petrel background. This fabric is very similar to a well-known fashion brand, it has designer written all over it and very classy.

REF: 1808J03 Width: 150cm/59" £10.00 PER METRE

❁ SHAPE OF THINGS TO COME

165cm wide, 96% Viscose, 4% lycra heavy jersey in a very pale cream with dozens dark navy different shapes, none bigger than 2cm across or deep, and all intermingling. With the right hat you could go to Ascot in this.

REF:1807P08 Width: 165cm/64" £ PER METRE

❁ SMOOTH AS...

140cm wide, pure silk jersey, in a nice royal blue or cerise pink. The cloth just melts in your fingers and collapses in a heap if you let it go, but picks itself up and starts all over again. Absolutely gorgeous.

a) Royal Blue

b) Cerise Pink

REF: 1807M07 Width: 150cm/59" £16.00 PER METRE

❁ STRICTLY BALLROOM - PHOTO ON FRONT COVER

150cm wide knitted polyester cloth in shiny metalised finished in gold, do they still call them ra ra skirts? I think they do.....

REF:1809J22 Width: 150cm/57" £6.00 PER METRE

❁ ST ELSEWHERE

150cm wide, fine polyester, pongee in a shade of khaki or taupe or light brown, which I hope you can gather the colour, which incidentally would go with a pin striped velvet described elsewhere in this missive, beautifully soft and sufficiently neutral to go with lots of other colours.

REF:1807BS07 Width: 150cm/59" £4.50 PER METRE

❁ STORM FORCE

145cm wide, 96% polyester, 4% lycra, Italian dress fabric in black with a random abstract print in pale orange, pale turquoise, pale mustard, grey, taupe and brown. The splodges look a bit like the storm weather pattern where the colour highlights the storm with various colours. Now these colours are on the cloth but it does remind you of a weather forecast for somewhere in the Caribbean come hurricane time. There is a little bit of substance in this cloth but it is still a superbly draping fabric.

REF:1807P03 Width: 145cm/57" £12.00 PER METRE

❁ SWEATS – SWEATSHIRT MATERIAL

Cotton mix lightweight sweatshirt fabric. All weigh 280gsm, perfect for shorts, jogging pants, polo shirts. t-shirts, lightweight casual hoodies.

a) Teal – 174cm wide

b) Navy - 180cm wide.

c) Grey Marl - 190cm wide

d) Cobalt - 190cm wide

e) Pink – 190cm wide

REF: 1808B47 Width as Stated £7.50 PER METRE



🌸 SILKY SATIN EXOTIC FOREST - PHOTO BACK COVER

Beautifully light polyester satin dress fabric in ivory with an all over palm leaves print.

REF: 1805O01 Width: 145cm/55" **£8.00 PER METRE**

T

🌸 TAKEN ABACK

I was stood here, pontificating by this cloth, when I found if I had just used my loaf and taken it down from the shelf, and examined it more closely, at which point, I would have found that it is a jersey and not a plain woven cloth, as I had thought. It is a Superb Italian Ponte Roma and made from 68% viscose, 27% polyamide, 5% spandex. It is 150cm wide made up of black and very pale grey yarns and is altogether rather splendid.

REF:1807M02 WIDTH: 150cm/59" **£12.00 PER METRE**

🌸 TOP SHELF

150cm wide, Italian black, fine silky polyester dress cloth from Italy, with an all over, but not dense, leafy pattern in a cream, turquoise, beige, pink, taupe, with tiny little butterflies floating hither and zither, together with some rather nice small birds perhaps chasing the butterflies or just looking for something to eat. All very delicate and very pretty

REF:1807P11 Width: 150cm/59" **£10.95 PER METRE**

🌸 TO PARTY OR NOT TO PARTY

This is a little selection of lacy fabrics all in black.

a) Net Border 140cm wide. Is a fairly delicate net upon which is an embroidered floral corded border lace mesh with plenty of the sheer net in evidence, it is scalloped at both sides and comes in black on a black net background. **£16.00 PER METRE**

b) Floral 140cm wide. Is a fairly delicate skin coloured net upon which is embroidered floral with plenty of the sheer net in evidence. **£12.75 PER METRE**

c) Guipure 134cm wide. Is a black all over scrawley embroidered sort of design loosely linked by a spiders web sort of arrangement holding the whole thing together. Photo on the back. **£15.00 PER METRE**

d) Double Scallop. 130cm wide, whisper light, fancy polyester net in palest beige with a quite substantial floral lace pattern in black with a double scalloped edge, pick the bones out of that lot! **£12.75 PER METRE**

REF: 1809C15 Width as stated **£ AS STATED**

🌸 THE UNKNOWN

150cm wide, beautifully soft silky polyester dress fabric in navy blue with either

a) Pink, A pink floral pattern grey and turquoise floral pattern.

b) Turquoise, A white or very pale

c) Red, a white and red floral pattern, there is an element of stretch drapes a dream and is quite a striking cloth.

REF:1809C01 Width: 150cm/59" **£4.25 PER METRE**

🌸 TAKE THE ROUGH WITH THE SMOOTH

150cm wide, black fairly substantial Ponte Roma jersey with a very smooth side, or the reverse somewhat textured. You would probably only want to use the smooth side if you want something that is just a tad different then by all means use the reverse.

REF:1805J15 Width: 150cm/59" **£4.50 PER METRE**

🌸 THE UN-DYED - NO PHOTO

156cm wide, undyed, plain cotton, trousering in its almost natural state. The cloth is shrunk and finished however, just not dyed.

REF:1703J01 Width: 156cm/61" **£6.00 PER METRE**

🌸 TO DIE FOR, BUT NOT YET

150cm wide soft, but not insubstantial polyester crepe dress fabric in cream with a sprawling and quite large floral design in red with black detailing.

REF:1809C04 Width: 150cm/59" **£5.00 PER METRE**

V

🌸 VILLAIN

I have a picture in my mind of Tee Hee the James Bond villain, one of Mr Biggs hench men who always dressed in black and who had a hook instead of a hand, you may recall. But he was always smart and could possibly be dressed in this 137cm wide heavy poly viscose suiting/jacketing in black with the smallest self-coloured design in the weave, black but different.

REF: 1708J09 Width: 137cm/53" **£7.00 PER METRE**



W

WARLEGGAN

145cm wide cotton velveteen in pale mushroom with a fine white pinstripe at 7.5mm intervals, plenty of yarn in this allows for a fine weave and fairly light cutting giving the velveteen surface which is extremely comfortable.

REF:1711J07 Width: 145cm/57" £7.00 PER METRE

WHAT'S IN A NAME?

150cm wide, very different light weight woollen suiting in a dirty sort of cream/oatmeal colour with fine but wiggly black weft yarns, woven along the selvedge is the name Laurent Garigue. You can tell he's from Yorkshire can't you? It has a nice hand and is akin to a muslin.

REF:1807P15 Width: 150cm/59" £23.00 PER METRE

WIDER STILL AND WIDER

A very fine carry on up the Khyber sort of cloth in Sahara beige, very fine polyamide cheese cloth. Quite transparent so winceyette underwear may be called for.

REF:1807BS03 Width: 158cm/62" £4.50 PER METRE

WINCEYETTES - SLEEP TIGHT

A lovely fabric that is soft to the touch, during the process of creating the fabric; the cotton is brushed on the face side to remove any lint and fibres. The process leaves a soft face that helps to trap heat; yet as a cotton it is also breathable.

a) Skye - 110cm wide b) Rise and Shine - 140cm wide
c) Pride - 150cm wide d) Sweetie Belle - 112cm wide
e) Gilly The Giraffe - 112cm wide f) Dottie Lottie Red - 148cm wide
g) Dottie Lottie Navy - 150cm wide

REF: 1807B43 Width as Stated £5.50 PER METRE

SAMPLES

If ordering by post, please send us the reference number and name of the fabric you want plus the following depending on your requirements. Where there are a number of items under a reference please specify your preference; a, b, c, etc.

1-5 samples: please post your request and include a SAE
6-10 samples £2.50 (non-refundable)
11-25 samples £5.00 (non-refundable)

WIND IN THE EAST, SMELLS IN THE WEST

160cm wide, polyester nylon gently sueded knitted velvet in either gold or silver with contrasting but complimentary floral designs, very light, very soft and drapery suitable for long evening articles.

a) Gold b) Silver

REF:1809011 Width: 160cm/62" £12.00 PER METRE

WINGS OF A DOVE - PHOTO ON BACK COVER

145cm wide, soft, fine, lightweight, Italian made lambswool, Melton coating in a pinkish beige. It is more beige than pink but it is in certain lights that the pink comes to the fore. It has the most fabulous hand and all in all is most special.

REF:1702J05 Width: 145cm/57" £20.00 PER METRE

WOOLS

Here you have a bunch of woollen cloths you're not likely to clap eyes on and sadly it's becoming increasingly rare and therefore exclusive.

GROUSE - PHOTO ON FRONT COVER

A rather magnificent flat tweed woollen check jacket cloth in a positive but subdued moorland check, in all the subtle colours you would expect to find when doing your grouse thing or just walking the hills and dales, fells and mountains.

REF: 1807K11 Width: 150cm/59" £29.00 PER METRE

GAME ON

A very traditional big check in many shades of brown with a fine line over check in dark red and a much softer cloth the sort of thing that Tink wore in Lovejoy, bless him.

REF: 1807K07 Width: 158/62" £29.00 PER METRE

HERRINGBONE

This is fairly different to all the others in that it has a faint, but positive herringbone weave pattern in lilac, beige, grey, a red colour rust and a mix of all these in addition to having a fairly fine white line over check.

REF: 1807K04 Width: 156cm/61" £29.00 PER METRE

X9 DRESS LININGS - SUPERIOR QUALITY

We have good quality polyester linings to match: **1)** White, **2)** Ivory, **3)** Biscuit, **4)** Dark Beige, **5)** Light Brown, **6)** Dark Chocolate, **7)** Pale Grey, **8)** Grey, **9)** Battleship, **10)** Dark Grey, **11)** Black, **12)** Pale Mint, **13)** Mint, **14)** Apple, **15)** Pale Sage, **16)** Moss, **17)** Bottle Green, **18)** Baby Pink, **19)** Dusty Pink, **20)** Magenta, **21)** Dark Red, **22)** Cerise, **23)** Amethyst, **24)** Dark Amethyst, **25)** Lilac, **26)** Cloud Blue, **27)** Turquoise, **28)** Pale Aqua, **29)** Royal Blue, **30)** Navy Blue, **31)** Lemon

We happy to match or contrast the lining, just give us the instruction and we can pick one for you. 60" (152 cm) wide. **£2.75 PER METRE**

X4 ELASTIC

- | | |
|--|------------------------|
| a) 5 mm wide, white: | 10p PER METRE |
| b) 7 mm wide, white: | 15p PER METRE |
| f) 7 mm wide, black: | 15p PER METRE |
| c) 10 mm wide, white: | 20p PER METRE |
| e) 20 mm (1" wide), white: | 26p PER METRE |
| f) 30 mm (1.25" wide), white: | 30p PER METRE |
| g) 30 mm (1.25" wide), black: | 33p PER METRE |
| h) 40mm wide, white: | 40p PER METRE |
| i) 50mm wide, white j) 50mm wide black | £1.50 PER METRE |

X4I ELASTIC - CLEAR

3metres of 9mm wide lightweight elastic - by the pack **£6.00 PER PACK**

X23 DRESS MAKING ELASTIC

- | | |
|---|------------------------|
| d) Drawstring elastic, white | £1.25 PER METRE |
| e) Drawstring elastic, black | £1.25 PER METRE |
| f) Round cord elastic, 4mm wide, white | 70p PER METRE |

X5 INTERFACING - IRON ON

36" wide white iron on interfacing.

- | | |
|---|------------------------|
| a) Medium weight (Vilene type): | £2.00 PER METRE |
| b) Light weight (Vilene type): | £1.80 PER METRE |
| c) Lightweight Voile Cotton Interfacing, white: | £6.75 PER METRE |
| d) Lightweight voile cotton interfacing, black (width 35"/90cm): | £6.75 PER METRE |

X29 BUCKRUM

- | | |
|--|------------------------|
| a) Double Iron On - Double sided iron on heavy stiff white buckrum. 160cm wide | £4.25 PER METRE |
| b) Single Iron on - Slightly softer and lighter than the double iron on. 150cm wide | £4.25 PER METRE |

X6 INTERFACING - TRADITIONAL

A mix of cotton/viscose/horsehair/polyester substantial woven traditional interfacing 32" (81 cm) wide: **£5.00 PER METRE**

X20 WADDING

- | | |
|---|------------------------|
| a) 54" wide (2 oz in old money) polyester wadding, the quilter's favourite weight it would appear: | £3.50 PER METRE |
| b) Cotton Wadding - 100% British Made Cotton Bump, Width: 140cm: | £8.50 PER METRE |

X13 SEWING MACHINE NEEDLES - STANDARD

Pack of Assorted Sewing Machine Needles: (9.11.11.14.16) **£2.00 PER PACK**

X7 HAND SEWING NEEDLES

Pack of 12 assorted hand sewing needles. **£2.00 PER PACK**

X26 PINS APPROX 200 PER BOX

Perfect box of 2.5cm pins for holding fabric together. **£2.00 PER BOX**

X8 HEMMING WEB

4 metre cards of white hemming web: **70p EACH**

X14 STITCH RIPPERS

Stitch rippers: **£1.20 EACH**

X15 TROUSER HOOK AND BARS

Trouser hooks and bars, 3 pairs per pack: **£1.20 PER PACK**

- | | |
|------------------|-----------------|
| a) Silver | b) Black |
|------------------|-----------------|

X17 THREAD - REELS (ASK US TO MATCH, WE HAVE LOTS OF COLOURS.)

1000 yard coats moon 120's spun polyester thread. **£1.20 EACH**

X18 THREAD - CONES

5000 metre cones of 120's polyester thread.

- | | | | |
|-----------------|-----------------|-----------------|-------------------|
| a) Black | b) White | c) Cream | £3.00 EACH |
|-----------------|-----------------|-----------------|-------------------|

XTC TAILORS CHALK

Tailor chalks in either yellow, red, blue and white. **90p EACH**

X16 TAPE MEASURES

Best Quality Fiberglass tape measures in metric/imperial one side, imperial only on the other: **£1.50 EACH**

X219 9" CONCEALED ZIPS

9" (23cm) nylon, quality concealed closed end dress zips **£1.25 EACH**

- | | | | |
|--------------------|------------------------|------------------|------------------|
| a) Black | b) Bottle Green | c) Brown | d) Beige |
| f) Cream | g) Navy | h) White | i) Pink |
| j) Lipstick | k) Turquoise | l) Ivory | m) Candy |
| n) Salmon | o) Cerise | p) Damson | q) Purple |
| r) Greys) | s) Dark Red | | |

X22 22" CONCEALED ZIPS

22" (56cm) nylon, quality concealed closed end dress zips **£1.75 EACH**

- | | | | |
|-----------------------|---------------------|------------------------|-----------------|
| a) Black | b) Dark Navy | c) Pale Pink | d) Beige |
| f) Puce | g) Wine | h) Cerise | |
| i) Light Stone | j) Pale Blue | k) Red | l) Pink |
| m) Purple | n) Ivory | o) Bottle Green | |

X11 ZIPS - SKIRT

7" (18 cm) nylon good quality closed end skirt zips: **40p EACH**

- | | | | | |
|---------------------|---------------------|---------------------|--------------------|-----------------|
| a) Black | b) White | c) Cream | d) Beige | e) Ivory |
| f) Brown | g) Grey | h) Pale Pink | i) Green | |
| j) Navy Blue | k) Pale Blue | l) Red | m) Burgundy | |
| n) Claret | o) Dark Grey | p) Jade | | |

X12 ZIPS - DRESS

22" (56 cm) nylon good quality closed end dress zips: **£1.00 EACH**

- | | | | |
|-----------------|-----------------|-----------------|-----------------|
| a) Black | b) White | c) Ivory | d) Beige |
| e) Navy | f) Cream | g) Grey | h) Brown |

X25 SEWING TAPE

White cotton bunting crafting and sewing tape ¾"(19mm) wide

a) 25p per metre or b) £8.00 per 50 meter roll.

X27 BIAS BINDING

19mm bias binding **70p PER METRE**

a) Cotton - This comes in the following colours: Royal blue, grey, baby pink, yellow, black, dusky pink, turquoise, red, emerald green, lilac, pale blue, ivory, white.

b) Satin - This comes in the following colours: Red, white, pale blue, beige, pink, ivory

OFFICIAL USE - TRANSACTION ID



JOHN KALDOR HONEY RYDER - PG 12



MOUFLON RED - PG 13



TAPESTRY - PG 8



TO PARTY OR NOT TO PARTY - PG 16



CUDDLY - PG 5



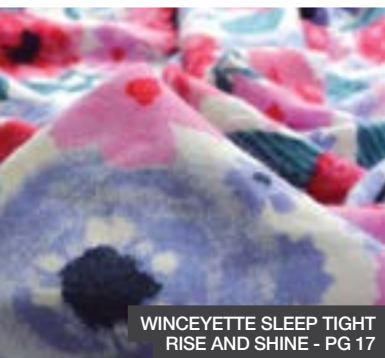
POPLIN PRINTS - PG 8



HUDDERSFIELD'S BEST THOMAS - PG 12



SILKY SATIN EXOTIC FOREST - PG 16



WINCEYETTE SLEEP TIGHT RISE AND SHINE - PG 17



LUXURY - PG 13



KARLA - PG 12



PEBBLE - PG 14



WINGS OF A DOVE - PG 17



JOHN KALDOR FONDLY - PG 12



POPLIN PRINT FAITH - PG 9



MERCERISED COTTON PUNCH - PG 13



PRETTIER THAN THOU BLUE - PG 14



POSY - PG 14



CHASING RAINBOWS - PG 4



COTTON CANVAS JO - PG 5